

# APMS150C105HD LED Drivers

Replacement BH Voltage driver for use on Appleton™ 13,500 and 17,500 Lumen Mercmaster™ LED Generation 3, 13,500 and 17,500 Lumen Industrial Mercmaster™ LED Generation 3, 15K and 19K Lumen Areamaster™ Generation 2 LED, 15K and 19K Lumen Industrial Areamaster™ Generation 2 LED, 30K and 38K Lumen Areamaster™ Generation 2 HL LED, 30K and 38K Lumen Industrial Areamaster™ Generation 2 HL LED, 15K and 19K Lumen Baymaster™ HL LED and 15K and 19K Lumen Industrial Baymaster™ LED, 30K and 38K Lumen Baymaster™ HL LED and 30K and 38K Lumen Industrial Baymaster™ HL LED.

## Features

- Input voltage: 347–480 Vac
- Built-in active PFC function: 0.98 typ.
- Built-in lightning protection
- High efficiency: 90% typ.
- Waterproof (IP67)
- Constant current/0–10V dimming/clock dimming (CLK)/ PWM dimming
- Protection: OVP, SCP, OTP
- UL Type TL, Type HL

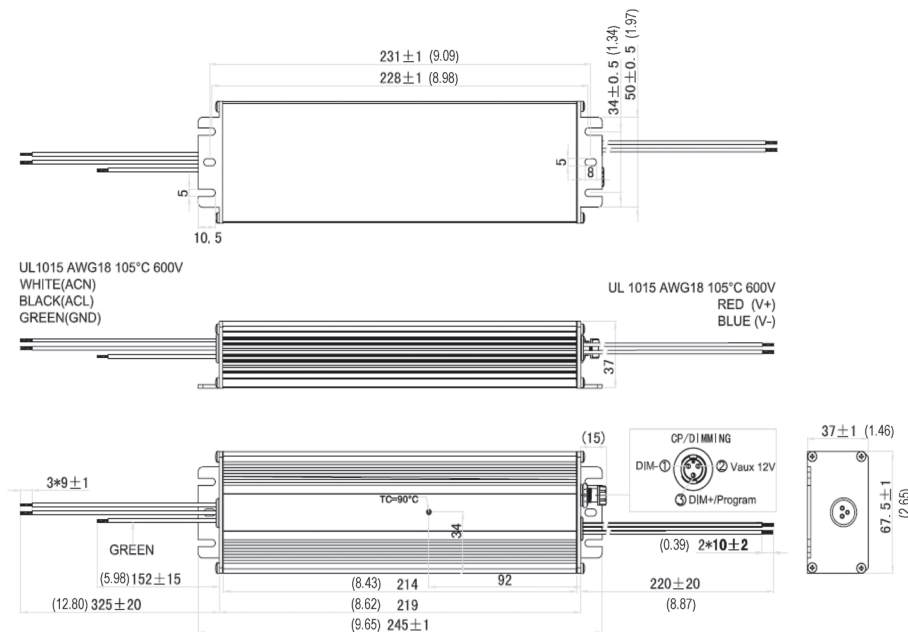


## NEC/CEC Compliances

- UL8750, UL1012, CSA 250.13

Output Current	Input Voltage	Max. Output Power	Typical Efficiency	Typical Power Factor	Used in BH Luminaire Models	Part Number
650 mA	347-480 Vac	150 W	90%	0.98	AMLGL7W and AMLHL2W BLL7W and BLLPL7W BHLL2W and BHLPL2W	APMS150C105HD65
680 mA	347-480 Vac	150 W	90%	0.98	AMLGL7C and AMLHL2C BLL7C and BLLPL7C BHLL2C and BHLPL2C	APMS150C105HD68
720 mA	347-480 Vac	150 W	90%	0.98	MLGH3	APMS150C105HD72
890 mA	347-480 Vac	150 W	90%	0.98	AMLGL8W and AMLHL3W BLL8W and BLLPL8W BHLL3W and BHLPL3W	APMS150C105HD89
900 mA	347-480 Vac	150 W	90%	0.98	MLGH6	APMS150C105HD90
915 mA	347-480 Vac	150 W	90%	0.98	AMLHL3C BHLL3C/BHLPL3C	APMS150C105HD91
930 mA	347-480 Vac	150 W	90%	0.98	AMLGL8C BLL8C/BLLPL8C	APMS150C105HD93

## Dimensions in Millimeters (Inches)

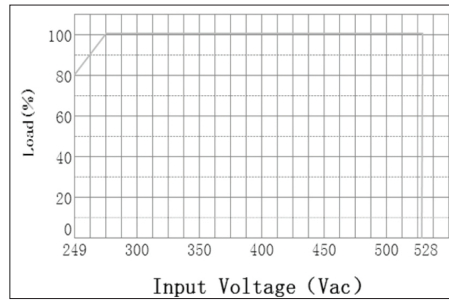


# APMS150C105HD LED Drivers

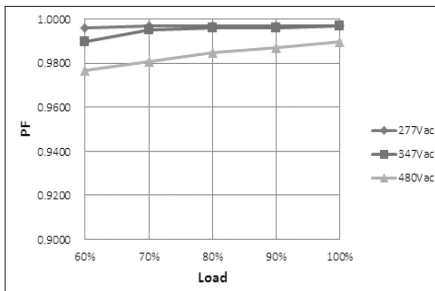
Replacement BH Voltage driver for use on Appleton™ 13,500 and 17,500 Lumen Mercmaster™ LED Generation 3, 13,500 and 17,500 Lumen Industrial Mercmaster™ LED Generation 3, 15K and 19K Lumen Areamaster™ Generation 2 LED, 15K and 19K Lumen Industrial Areamaster™ Generation 2 LED, 30K and 38K Lumen Areamaster™ Generation 2 HL LED, 30K and 38K Lumen Industrial Areamaster™ Generation 2 HL LED, 15K and 19K Lumen Baymaster™ LED and 15K and 19K Lumen Industrial Baymaster™ LED, 30K and 38K Lumen Baymaster™ HL LED and 30K and 38K Lumen Industrial Baymaster™ HL LED.

## Diagrams

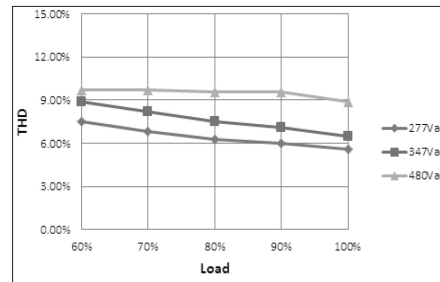
Derating Curve



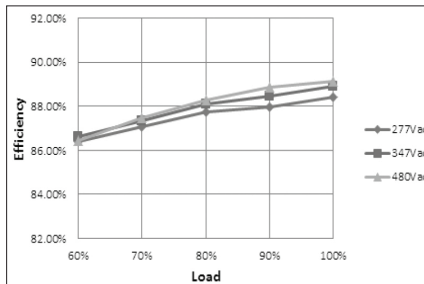
Power Factor vs. Load Curve



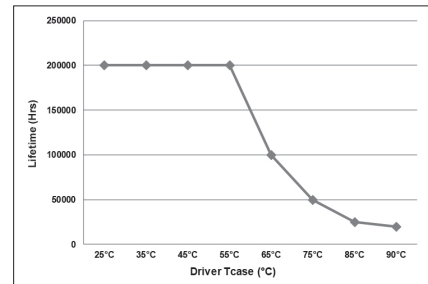
THD Curve



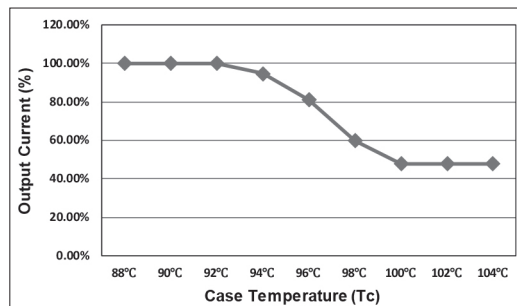
Efficiency vs. Load Curve



Lifetime vs. Driver Tcase



OTP



# APMS150C105HD LED Drivers

Replacement BH Voltage driver for use on Appleton™ 13,500 and 17,500 Lumen Mercmaster™ LED Generation 3, 13,500 and 17,500 Lumen Industrial Mercmaster™ LED Generation 3, 15K and 19K Lumen Areamaster™ Generation 2 LED, 15K and 19K Lumen Industrial Areamaster™ Generation 2 LED, 30K and 38K Lumen Areamaster™ Generation 2 HL LED, 30K and 38K Lumen Industrial Areamaster™ Generation 2 HL LED, 15K and 19K Lumen Baymaster™ LED and 15K and 19K Lumen Industrial Baymaster™ LED, 30K and 38K Lumen Baymaster™ HL LED and 30K and 38K Lumen Industrial Baymaster™ HL LED.

## Specifications ①

Input	Efficiency (277 Vac) ②	88% (Typical), >86% at full load
	Efficiency (480 Vac) ②	90% (Typical), >88% at full load
	Voltage Range (V)	249–528 Vac
	Frequency Range (Hz)	47 ~ 63
	Power Factor	0.96 (Typical), 0.94 (minimum) at 480 Vac
		>0.9 with 60% ~ 100% load, at 277 ~ 480 Vac
	THD	<15% with 80% ~ 100% load, at 277 ~ 480 Vac
		<20% with 60% ~ 100% load, at 277 ~ 480 Vac
	AC Current (Max.)	0.72 A max. at 277 Vac
	Inrush Current (Max.)	65 A at 480 Vac input +25 °C Cold Start (time wide=500 uS, measured at 50% I <sub>peak</sub> )
Leakage Current (Max.)	0.75 mA at 480 Vac/50 Hz	
Output	Output Voltage Range (V)	214–86
	Output Current Range (mA)	70–1050
	Rated Power (W)	150 (max.)
	Output Current Settable Range	0.45 to 1.05 A dc
	Constant Power Output Set Range	65% I <sub>o_max</sub> ~ 100% I <sub>o_max</sub>
	Ripple Current	<10% [(PK-AV) /AV], full load
	Current Tolerance	5%
	Line Regulation	3%
	Load Regulation	5%
	Turn on Delay Time	2s (typ.), measured at 277 Vac input
Dimming Control	12 Vdc Output Voltage (Vdc)	10.8 V min. ~ 12 V typ. ~ 13.2 V max.
	12 Vdc Output Current (mA)	0 mA ~ 20 mA max.
	0 ~ 10V/DIM+ Voltage	Absolute maximum voltage -10 V min ~ 20 V max
	0 ~ 10V/DIM+ Short Current	280 uA ~ 450 uA (DIM(+)=0)
	Dimming Function	0 ~ 10 V/10% I <sub>o</sub> ~ 100% I <sub>o</sub>

# APMS150C105HD LED Drivers

Replacement BH Voltage driver for use on Appleton™ 13,500 and 17,500 Lumen Mercmaster™ LED Generation 3, 13,500 and 17,500 Lumen Industrial Mercmaster™ LED Generation 3, 15K and 19K Lumen Areamaster™ Generation 2 LED, 15K and 19K Lumen Industrial Areamaster™ Generation 2 LED, 30K and 38K Lumen Areamaster™ Generation 2 HL LED, 30K and 38K Lumen Industrial Areamaster™ Generation 2 HL LED, 15K and 19K Lumen Baymaster™ LED and 15K and 19K Lumen Industrial Baymaster™ LED, 30K and 38K Lumen Baymaster™ HL LED and 30K and 38K Lumen Industrial Baymaster™ HL LED.

Specifications ①		
Protection	Over Voltage (V)	<280V Protection type: Voltage limiting output will not exceed the upper limit voltage, recovers automatically after fault condition is removed.
	Short Circuit	Protection type: Hiccup mode; recovers automatically after short is removed.
	Over Temperature	Protection type: Decrease output current. When Tc reaches +100 °C +/- +10 °C, the output current decrease to approximate 50% of rated value. (See OTP plot.)
Environment	Operating Humidity	20 ~ 95% RH non-condensing
	Tc	-40 °C to +90 °C max.
	Storage Temp., Humidity	-40 °C~ +85°C, 10-95% RH
	Vibration	10-500 Hz, 5G 12 min./cycle, period for 72 min. each along X, Y, Z axes
Safety & EMC	Safety Standard	UL8750, UL1012, CSA 250.13
	Withstand Voltage	I/P-O/P:3.75K Vac I/P-FG:1.875KV O/P-FG:1.5KV
	Isolation Resistance	I/P-O/P:100M Ohms (500Vdc/25°C/70%RH)
	EMC Emission	Conducted Emission: FCC PART 15 Class A, Radiated Emission: FCC PART 15 Class A
	EMC Immunity	EN61000-4-2,3,4,5,6,8,11; EN61000-4-5: Line to Neutral: ±6kV; Line to GND: ±6kV ; Neutral to GND: ±6kV. IEEE / ANSI C62.41.2 Transient surge requirements, combi wave 2 ohm source impedence
Others	MTBF	300,000 hours, measured at full load, +25 °C ambient temperature MIL-HDBK-217F (+25 °C)
	Lifetime	Refer to plot
	Dimension	245 x 67.5 x 37 mm (L x W x H); (9.65 x 2.66 x 1.46 inches)
	Weight (Typ.)	1050 g (2.31 lb)

① All parameters NOT specially mentioned are measured at 480 Vac input, rated load and 25°C of ambient

② Measured at full load and steady-state temperature in 25°C ambient (Efficiency will be about 2% lower if measured immediately after startup)